

English

Auto lathe maker with 70 years of tradition

NOMURADS

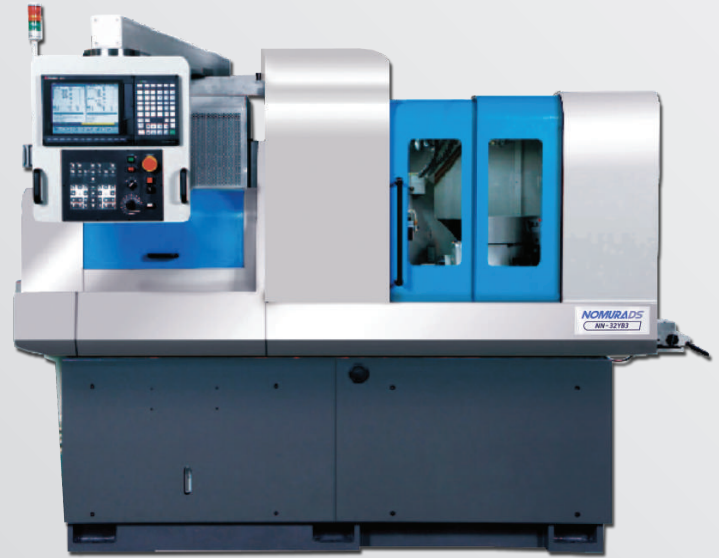
Swiss Type CNC Automatic Lathe
NN-32YB3



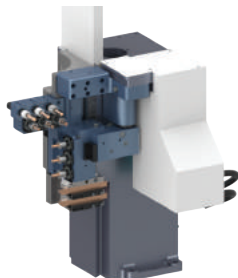
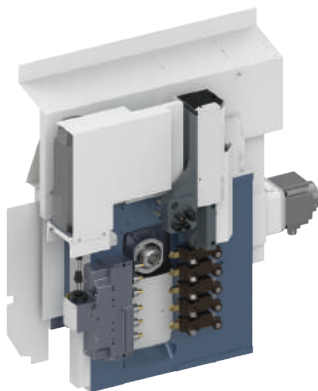
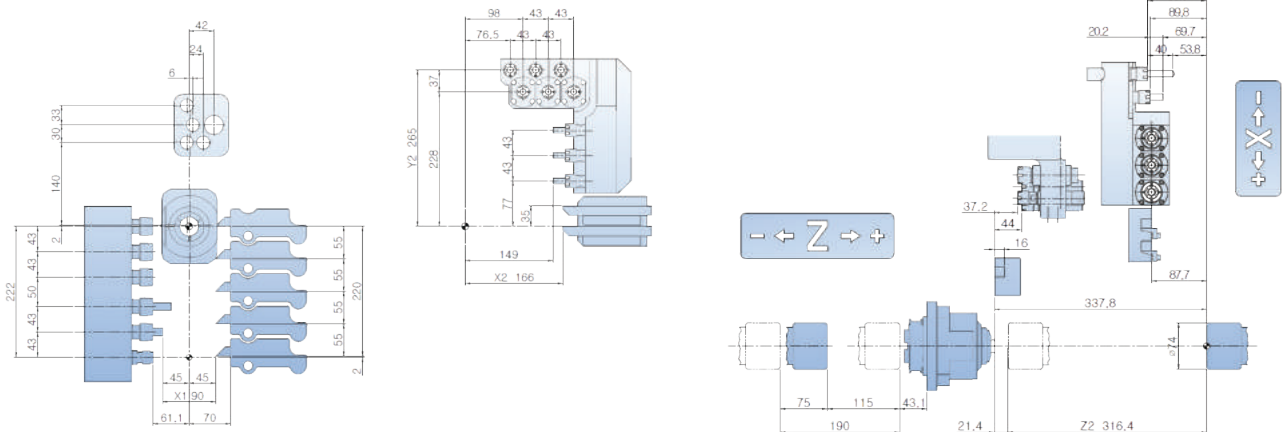
CNC AUTOMATIC LATHE

NN-32YB3

-  **Competitive tooling capacity**
- Maximized number of tools (sub tool post)
-  **The best selling model**
- Horizontal tool post
- Dovetail structure
-  **Specialized for complicated shape parts**
- Expanded tool options
-  **Minimized heat deformation and vibration**
- Integrated casting bed



Tool Layout



\$1(Main)

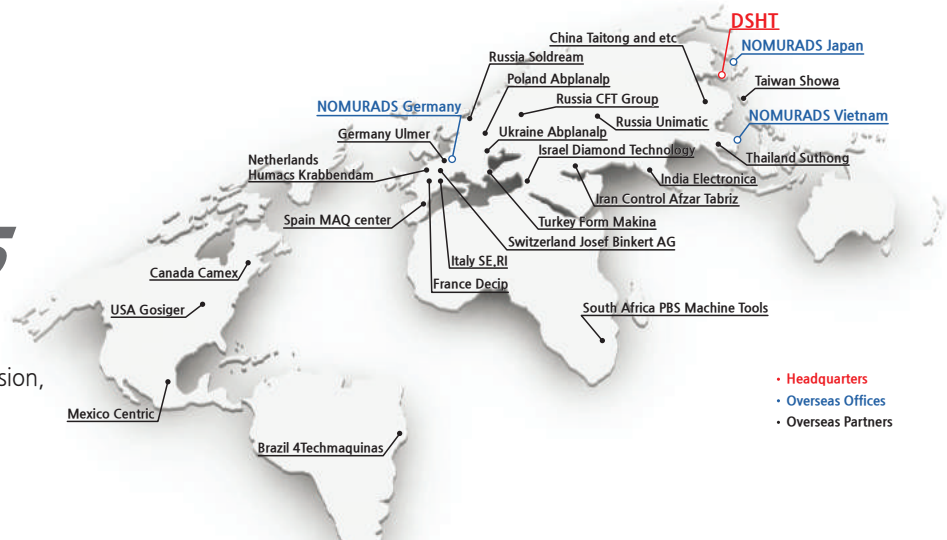
Tool name	Size	Equipment
O.D. Tool	□16.0 x 5	Standard
I.D. Tool	ER-20 x 1/ER16 x 3	Standard
Cross Drill	ER20 x 6	Standard

\$2(Sub)

Tool name	Size	Equipment
O.D. Tool	□16.0 x 2	Standard
I.D. Too	ER16 x 3	Standard
Cross Drill	ER16 x 3	Standard
Eccentric Drill	ER16 x 3	Standard



has been manufacturing swisstype auto lathe for the last 70 years.
When you choose NOMURA, you will have high precision, durability and innovation for your production.



- Headquarters
- Overseas Offices
- Overseas Partners



Headquarters DAESUNG HI-TECH
10, Techno-daero 2-gil, Hyeonpung-myeon, Dalseong-gun, Daegu 43020, Korea



Vietnam DAESUNG HI-TECH VINA
TS9 Street, Tien Son Industrial Zone, Tuong Giang Commune, Tu Son Town, Bac Ninh Province



East Japan Technical Center
5-6, Imadera 4, Ome-city, Tokyo



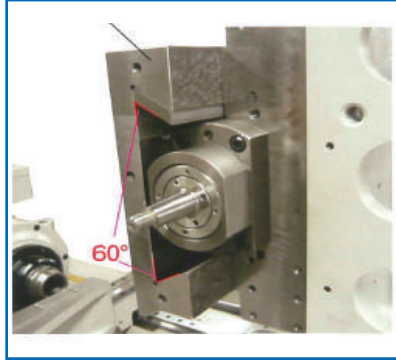
West Japan Technical Center
909, Wakada 3, Midori-ku, Aichi-pref



German Office
Ludwig-Erhard-Str. 30-34, 65760 Eschborn, Germany

NOMURADS

Dovetail structure



The rigidity of NOMURA DS machine is enhanced as its structure contacts the surface of both sides.

Hand scraping



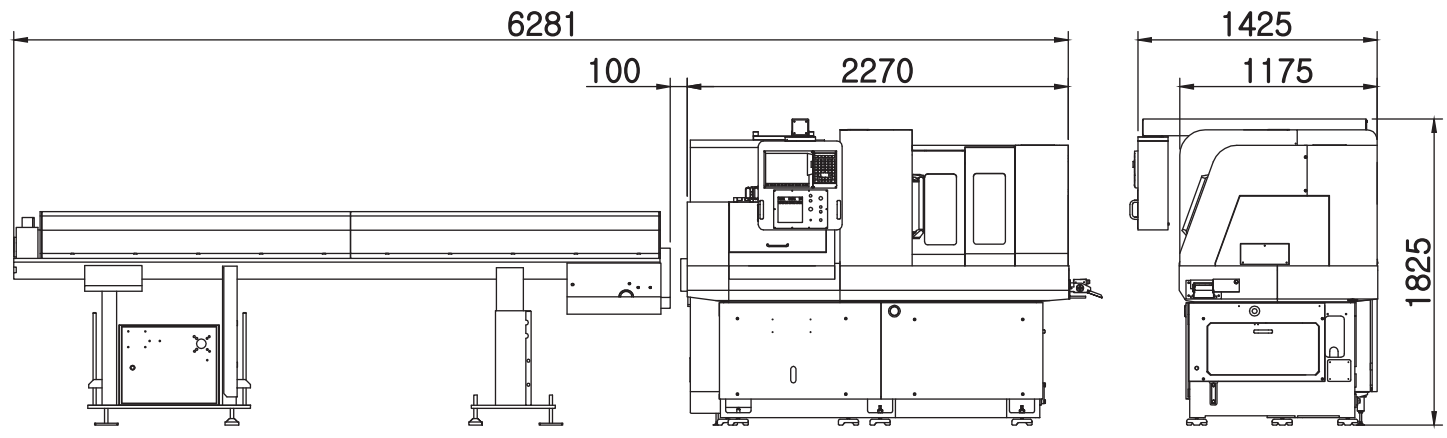
The weighty tool post is glided smoothly by our master artisans and high precision is enhanced as the result.

Integrated casting bed



Machine vibrations is absorbed and machining tolerance affected by the temperature change of cutting oil can be minimized as temperature turning is enacted with coolant tank located in the casting bed.

FLOOR Layout



NN-32YB3 Specifications

Content	Specification	Specification Value	Standard Accessories
Machining capacity	Max. machining diameter	φ32mm	I.D. tool unit
	Max. machining length	190mm /1chuck	Cross drill unit
	Max. parts unloading length	93mm	Manual pulse generator(MPG)37P
Spindle	Main spindle through-hole diameter	φ37mm	Coolant unit
	Spindle rpm (Main/Sub)	Max. 8,000rpm	Rotary guide bush
	Sub spindle chucking diameter	φ32mm	Tool holder
Tool	Max. number of tools	30	Drill holder
	Max. machining drill	φ13mm	Main : Chuck sleeve /Spring/Spindle cap(1set)
	Max. machining tap	M10	Sub : Chuck sleeve /Spring/Spindle cap(1set)
Main	O.D. tool	5 (□16X150mm max)	Automatic power turn-off device
	I.D. tool	4 (ER16x3 + ER20x1)	Automatic oiling device (level detector attached)
	Cross drill	6 (ER20x6)	Cutting oil device (Main/Sub)
	Cross drill rpm	Max. 6,000rpm	Coolant failure detector
SUB	O.D. tool	2 (□16X150mm max)	Overload detection function
	I.D. tool	3 (ER16)	Door interlock switch
	I.D. eccentric	3 (ER16)	Working light (LED)
	Cross drill	3 (ER16)	Parts conveyor
	Cross drill rpm	Max. 6,000rpm	Levelling pad
Feed	Rapid feed rate	X1 : 20/min X2 : 25m/min Z1,Z2,Y1,Y2 : 28m/min	Signal warning light – 3 stage
	Min. command unit	0.0001mm(Mitsubishi) / 0.001mm(Fanuc)	Display language (CHN/ENG/FRA/GER/ITA/JPN/KOR/POL/RUS/SPA)
	C axis Min. command unit (Main, Sub)	0.0001°(Mitsubishi) / 0.001°(Fanuc)	Optional Accessories
Motor	Main spindle motor	5.5/3.7Kw(Mitsubishi) / 7.5/5.5kW(Fanuc)	Fanuc Oi-TF
	Cross drill motor	1.5kW(Mitsubishi) / 1.0kW(Fanuc)	E3 UNIT
	Sub spindle motor	3.7/1.5kW(Mitsubishi) / 5.2/2.2kW(Fanuc)	7-spindle cross drilling unit
	\$2 cross drill motor	1.5kW(Mitsubishi) / 1.0kW(Fanuc)	O.D. tool post (6 holes)
	X1.Y1,Z1,X2.Y2,Z2 axis feed motor	1.0kW(Mitsubishi) / 1.4kW(Fanuc)	Long drill holder
	Coolant pump (Main, Sub)	0.25kW x 2	Fixed guide bush
	Lubricant pump	0.003kW	Tap breakage detector
Dimensions and etc.	Main spindle center height	1,000mm	Tool presetter
	Input power capacity	15KVA	Tool air blow
	Air pressure, flow rate	0.6MPa. 20L/min	Rear ejection unit (φ24mm or less)
	Coolant tank	100L	Spindle tube liner for small part
	WxDxH	2,270x1,425x1,825 mm	Large-sized lubricant pump 1.8ℓ
	Weight (Options included)	3,030kg	Chip conveyor & Chip box
NC	NC(MITSUBISHI/FANUC)	M70V Type A, M80 / Oi TF	Medium / High pressure coolant
	NC display	10.4 Color TFT LCD	Automatic fire extinguisher
	Memory capacity	500KB(Mitsubishi) / 1MB(Fanuc)	Oil mist collector
	Number of tool offset	80sets(Mitsubishi) / 128sets(Fanuc)	Custom colors
	Background edit function		Tooling
	C axis function (Main, Sub spindle)		
	User macro function		
	Nose R compensation		
	Corner chamfering / Corner rounding		
	Fixed cycle		
	Complex fixed cycle		
	Geometric commands		
	Controller manual		
	Serial in / Output interface		
CF card / USB interface			

DAESUNG HI-TECH 10, Techno-daero 2-gil, Hyeonpung-myeon, Dalseong-gun, Daegu 43020, Korea
TEL.+82-53-608-3662 / FAX.+82-53-592-6577

NOMURADS 3-1-12, IMAI, OME-CITY, TOKYO198-0023, JAPAN TEL.+81-428-30-1313 / FAX.+81-428-30-1312

DAESUNG HI-TECH VINA TS9 Street, Tien Son Industrial Zone, Tuong Giang Commune, Tu Son Town, Bac Ninh Province
TEL.+84-241-3734-4125~6 / FAX.+84-241-3734-4124

HanzungNC Xuling Village, Xinhua Street, Zhuanghe city, Dalian Liaoning Province, China(Xinhua Industrial Zone)
TEL.+86-411-89812963 / FAX.+86-411-89812962

German office Ludwig-Erhard-Str. 30-34, 65760 Eschborn, Germany
TEL.+49-6196-969-5946 / E-mail.info@nomurads.de



www.nomurads.com