

English

Auto lathe maker with 70 years of tradition






NOMURADS

Swiss Type CNC Automatic Lathe

NN-20/25UB8

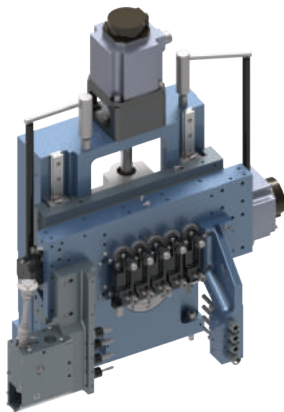
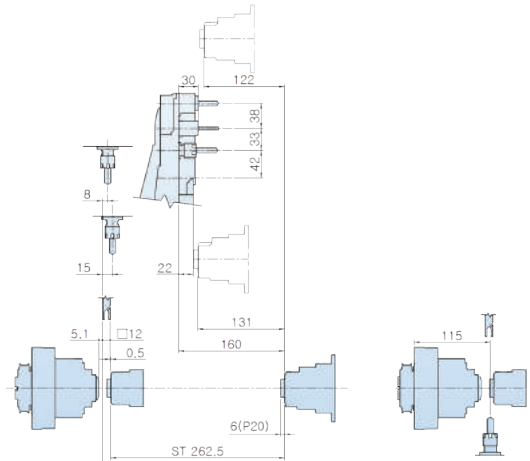
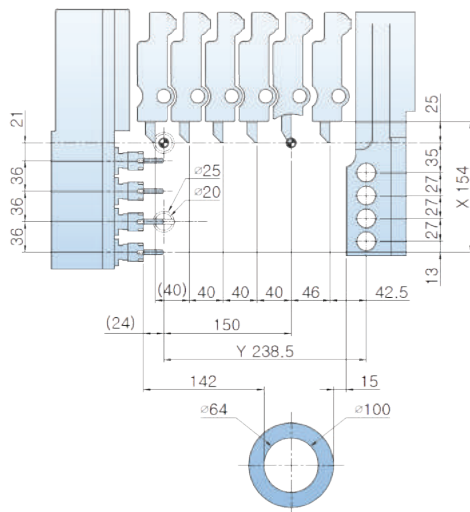


NN-20/25UB8

-  **NC controller selectable**
- MITSUBISHI, FANUC
-  **Expanded tool options**
- Eccentric turning operation on sub tool
-  **Guide / Non-guide bush type**
- Minimized remaining material (Non-guide bush type)
-  **Specialized for high-precision parts**
-  **High efficiency, reasonable price**



Tool Layout



\$1(Main)

Tool name	Standard Size	Option Size	Equipment
O.D. Tool	□12.7 x 5(Φ20) □12.7 x 3 + □16 x 2(Φ25)		Standard
I.D. Tool	ER16 x 4		Standard
Cross Drill	ER16 x 4	ER16 x 5	Standard



5 hole cross unit
(20UB8 Option only)



3-spindle drilling unit
(E3 unit - Option)
for eccentric machining

\$2(Sub)

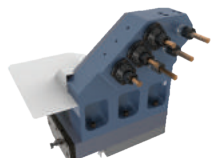
Tool name	Standard Size	K Type
I.D. Tool	ER16 x 4	ER16 x 2
I.D. Rotary Tool		ER16 x 2



Standard
4 fixed tools



K type
Rotary motor added



K2 type
Rotary motor added



has been manufacturing swisstype auto lathe for the last 70 years.
When you choose NOMURA, you will have high precision, durability and innovation for your production.



- Headquarters
- Overseas Offices
- Overseas Partners



Headquarters DAESUNG HI-TECH
10, Techno-daero 2-gil, Hyeonpung-myeon, Dalseong-gun, Daegu 43020, Korea



Vietnam DAESUNG HI-TECH VINA
TS9 Street, Tien Son Industrial Zone, Tuong Giang Commune, Tu Son Town, Bac Ninh Province



East Japan Technical Center
5-6, imadera4, ome-city, tokyo



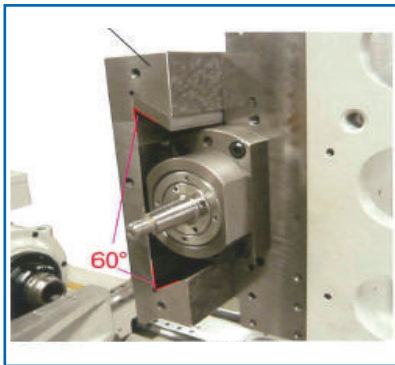
West Japan Technical Center
909, wakada3, midori-ku, aichi-pref



German Office
Ludwig-Erhard-Str. 30-34, 65760 Eschborn, Germany

NOMURADS

Dovetail structure



The rigidity of NOMURA DS machine is enhanced as its structure contacts the surface of both sides.

Hand scraping



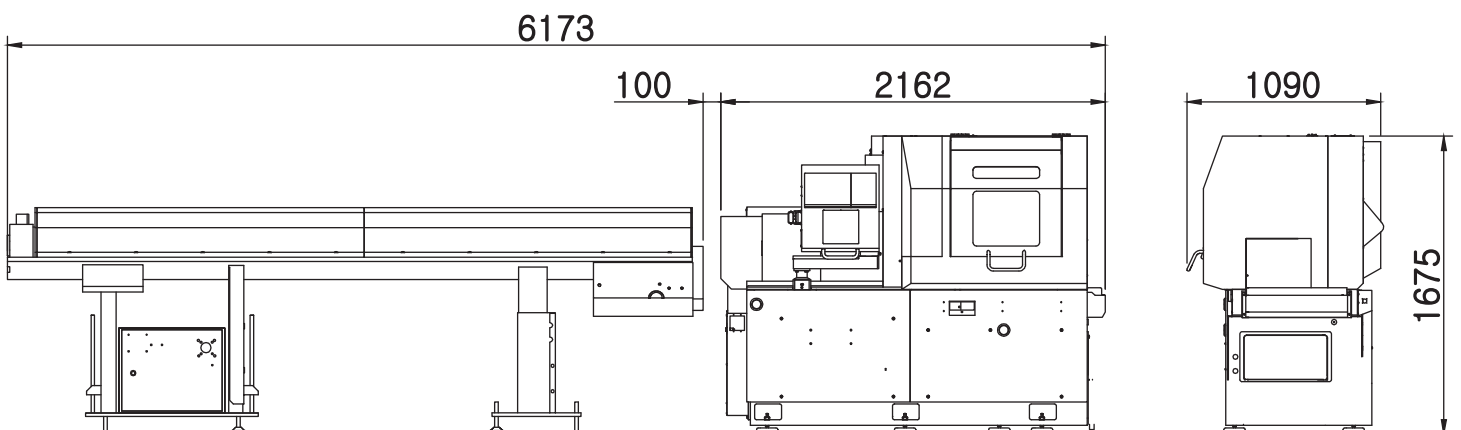
The weighty tool post is glided smoothly by our master artisans and high precision is enhanced as the result.

Integrated casting bed



Machine vibrations is absorbed and machining tolerance affected by the temperature change of cutting oil can be minimized as temperature turning is enacted with coolant tank located in the casting bed.

FLOOR Layout



NN-20/25UB8 Specifications

Content	Specification	Specification Value		Standard Accessories
		20UB8(K)	25UB8(K)	
Machining capacity	Max. machining diameter	Φ20mm	Φ25mm	I.D. tool unit
	Max. machining length	200mm / 1chuck		Cross drill unit
	Max. parts unloading length	105mm		Manual pulse generator(MPG)37P
Spindle	Main spindle through-hole diameter	Φ24mm	Φ27mm	Coolant unit
	Spindle rpm (Main/Sub)	Max.10,000/6,000rpm		Rotary guide bush
	Sub spindle chucking diameter	Φ20mm	Φ25mm	Tool holder
Tool	Max. number of tools	23	23	Drill holder
	Max. machining drill	Φ10mm		Main : Chuck sleeve /Spring/Spindle cap(1set)
	Max. machining tap	M8		Sub : Chuck sleeve /Spring/Spindle cap(1set)
Main	O.D. tool	5 (□12.7X150mm)	5 (□12.7x3+□16X2X150mm max)	Automatic power turn-off device
	I.D. tool	4 (ER16)		Automatic oiling device (level detector attached)
	Cross drill	4 (ER16)		Cutting oil device
	Cross drill rpm	Max. 6,000rpm		Coolant failure detector
SUB	I.D. tool	4(ER16) / K : 4 (2 fixed + 2 rotary)		Overload detection function
	Rotary tool			Door interlock switch
Feed	Rapid feed rate	30m/min		Working light (LED)
	Min. command unit	0.0001mm(Mitsubishi) / 0.001mm(Fanuc)		Parts conveyor
	C axis Min. command unit (Main, Sub)	0.0001°(Mitsubishi) / 0.001°(Fanuc)		Levelling pad
Motor	Main spindle motor	3.7/2.2kW(Mitsubishi) / 3.7/2.2kW(Fanuc)		Signal warning light - 3 stage
	Cross drill motor	0.75kW(Mitsubishi) / 1.0kW(Fanuc)		Display language (CHN/ENG/FRA/GER/ITA/JPN/KOR/POL/RUS/SPA)
	Sub spindle motor	1.5/0.55kW(Mitsubishi) / 2.2/1.5kW(Fanuc)		Optional Accessories
	\$2 rotary motor	0.4kW(Mitsubishi) / 0.5kW(Fanuc)		Fanuc Oi-TF
	Y1,X2,Z2 axis feed motor	0.5kW(Mitsubishi) / 1.4kW(Fanuc)		5-spindle cross drilling unit
	X1,Z1 axis feed motor	1.0kW(Mitsubishi) / 1.4kW(Fanuc)		3-spindle drilling unit (E3 UNIT)
	Coolant pump (Main, Sub)	0.25kW		Long drill holder
	Lubricant pump	0.003kW		Fixed guide bush
Dimensions and etc.	Main spindle center height	1,000mm		Tap breakage detector
	Input power capacity	12KVA		Tool presetter
	Air pressure, flow rate	0.6MPa.35L/min		Tool air blow
	Coolant tank	110L		Rear ejection unit (20UB: Φ17 / 25UB: Φ20 or less)
	WxDxH	2,162x 1,090 x1,675 mm	2,300x1,090x1,675 mm	Spindle tube liner for small part
	Weight (Options included)	2,135kg		Large-sized lubricant pump 1.8ℓ
NC	NC(MITSUBISHI/FANUC)	M70V Type A		Chip conveyor & Chip box
	NC display	8.4 Color TFT LCD		Medium / High pressure coolant
	Memory capacity	500KB(Mitsubishi) / 1MB(Fanuc)		Automatic fire extinguisher
	Number of tool offset	80sets(Mitsubishi) / 128sets(Fanuc)		Oil mist collector
	Background edit function			Custom colors
	C axis function (Main, Sub spindle)			Tooling
	User macro function			
	Nose R compensation			
	Corner chamfering /Corner rounding			
	Fixed cycle			
	Complex fixed cycle			
	Geometric commands			
	Controller manual			
	Serial in / Output interface			
CF card / USB interface				



www.nomurads.com

DAESUNG HI-TECH 10, Techno-daero 2-gil, Hyeonpung-myeon, Dalseong-gun, Daegu 43020, Korea
TEL.+82-53-608-3662 / FAX.+82-53-592-6577

NOMURADS 3-1-12, IMAI, OME-CITY, TOKYO198-0023, JAPAN TEL.+81-428-30-1313 / FAX.+81-428-30-1312

DAESUNG HI-TECH VINA TS9 Street, Tien Son Industrial Zone, Tuong Giang Commune, Tu Son Town, Bac Ninh Province
TEL.+84-241-3734-4125~6 / FAX.+84-241-3734-4124

HanzungNC Xuling Village, Xinhua Street, Zhuanghe city, Dalian Liaoning Province, China(Xinhua Industrial Zone)
TEL.+86-411-89812963 / FAX.+86-411-89812962

German office Ludwig-Erhard-Str. 30-34, 65760 Eschborn, Germany
TEL.+49-6196-969-5946 / E-mail.info@nomurads.de