

English




Auto lathe maker with 70 years of tradition

NOMURADS

Swiss Type CNC Automatic Lathe
NN-20J3

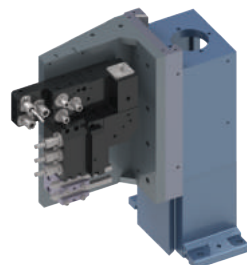
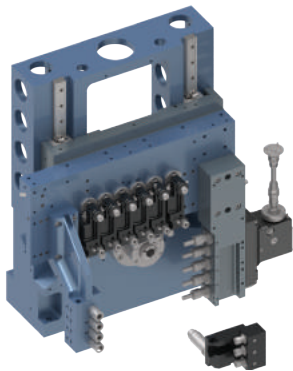
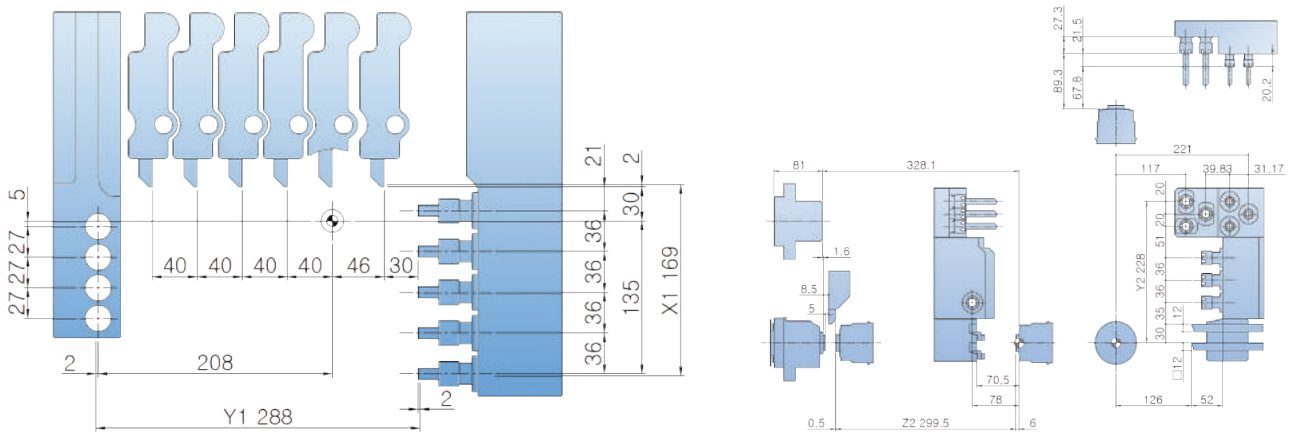


NN-20J3

-  **NC controller selectable**
- MITSUBISHI, FANUC
-  **The best tool layout among equivalent models**
- For complicated shape parts
- Shortened cycle time
-  **Expanded tool options**
-  **Specialized for high-precision parts**
- Horizontal tool post
- Dovetail structure



Tool Layout



\$1(Main)

Tool name	Size	Equipment
O.D. Tool	□12.7 x 6	Standard
I.D. Tool	ER16 x 4	Standard
Cross Drill	ER16 x 5	Standard



3-spindle drilling unit (E3 unit - Option)
for eccentric machining

\$2(Sub)

Tool name	Size	Equipment
O.D. Tool	□12.7 x 2	Standard
I.D. Tool	ER16 x 3	Standard
Cross Drill	ER16 x 3	Standard
Eccentric Drill	ER11 x 3	Standard



has been manufacturing swisstype auto lathe for the last 70 years.
When you choose NOMURA, you will have high precision, durability and innovation for your production.



- Headquarters
- Overseas Offices
- Overseas Partners



Headquarters DAESUNG HI-TECH
10, Techno-daero 2-gil, Hyeonpung-myeon, Dalseong-gun, Daegu 43020, Korea



Vietnam DAESUNG HI-TECH VINA
TS9 Street, Tien Son Industrial Zone, Tuong Giang Commune, Tu Son Town, Bac Ninh Province



East Japan Technical Center
5-6, imadera4, ome-city, tokyo



West Japan Technical Center
909, wakada3, midori-ku, aichi-pref



German Office
Ludwig-Erhard-Str. 30-34, 65760 Eschborn, Germany

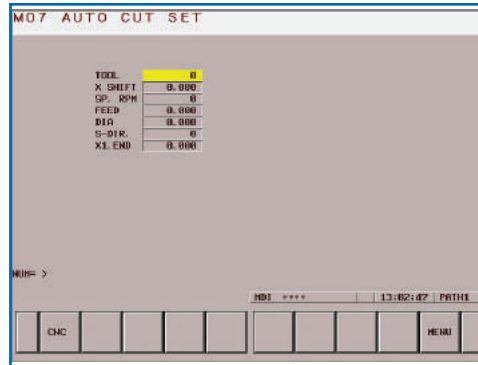
NOMURADS

FANUC Oi TF

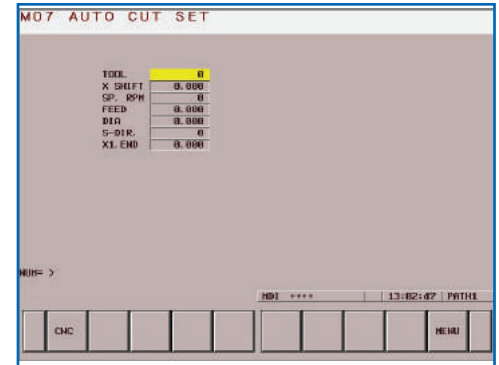


- 10.4" Color LCD
- Slant type for user's convenience
- User-friendly shortcut key

M07 AUTO CUT

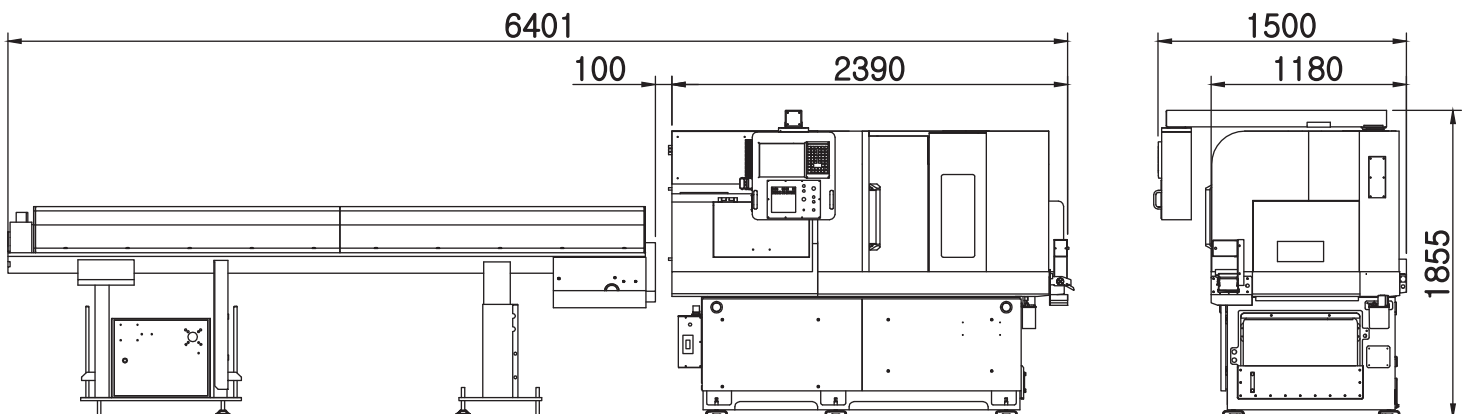


Screen for inputting information of automatic cutting function.
After inputting data according to above condition, command M07 in program.



This screen shows the setup of keep relay in PMC.
When turning the function on after moving cursor to each necessary function, the function is operated.

FLOOR Layout



NN-20J3 Specifications

Content	Specification	Specification Value	Standard Accessories
Machining capacity	Max. machining diameter	Φ20mm	I.D. tool unit
	Max. machining length	200mm / 1chuck	Cross drill unit
	Max. parts unloading length	93mm	Manual pulse generator(MPG)37P
Spindle	Main spindle through-hole diameter	Φ23mm	Coolant unit
	Spindle rpm (Main/Sub)	Max. 10,000rpm	Rotary guide bush
	Sub spindle chucking diameter	Φ20mm	Tool holder
Tool	Max. number of tools	30	Drill holder
	Max. machining drill	Φ10mm	Main : Chuck sleeve /Spring/Spindle cap(1set)
	Max. machining tap	M10	Sub : Chuck sleeve /Spring/Spindle cap(1set)
Main	O.D. tool	6 (□12.7X150mm max)	Automatic power turn-off device
	I.D. tool	4 (ER16)	Automatic oiling device (level detector attached)
	Cross drill	5 (ER16)	Cutting oil device(Main/Sub)
	Cross drill rpm	Max. 6,000rpm	Coolant failure detector
SUB	O.D. tool	2 (□12.7X150mm max)	Overload detection function
	I.D. tool	3 (ER16)	Door interlock switch
	I.D. eccentric	3 (ER11)	Working light (LED)
	Cross drill	3 (ER16)	Parts conveyor
	Cross drill rpm	Max. 6,000rpm	Parts catcher
Feed	Rapid feed rate	X1,Y1,X2,Y2:28m/min Z1,Z2:30m/min	Levelling pad
	Min. command unit	0.0001mm(Mitsubishi) / 0.001mm(Fanuc)	Signal warning light - 3 stage
	C axis Min. command unit (Main, Sub)	0.0001°(Mitsubishi) / 0.001°(Fanuc)	Display language (CHN/ENG/FRA/GER/ITA/JPN/KOR/POL/RUS/SPA)
Motor	Main spindle motor	3.7/1.5kW(Mitsubishi) / 3.7/2.2kW(Fanuc)	Optional Accessories
	Cross drill motor	0.75kW(Mitsubishi) / 1.0kW(Fanuc)	Fanuc Oi-TF
	Sub spindle motor	3.7/1.5kW(Mitsubishi) / 3.7/2.2kW(Fanuc)	Long drill holder
	\$2 cross drill motor	0.75kW(Mitsubishi) / 1.0kW(Fanuc)	3-spindle drilling unit (E3 UNIT)
	Y1,Z1,X2,Z2 axis feed motor	0.5kW(Mitsubishi) / 1.4kW(Fanuc)	Fixed guide bush
	X1,Y2 axis feed motor	1.0kW(Mitsubishi) / 1.4kW(Fanuc)	Tap breakage detector (Main, Sub)
	Coolant pump (Main, Sub)	0.25kW X 2	Tool presetter
	Lubricant pump	0.003kW	Tool air blow
Dimensions and etc.	Main spindle center height	1,010mm	Rear ejection unit (Φ17mm or less)
	Input power capacity	17KVA	Spindle tube liner for small part
	Air pressure, flow rate	0.6MPa, 40L/min	Large-sized lubricant pump 1.8ℓ
	Coolant tank	160L	Chip conveyor & Chip box
	WxDxH	2,390x1,500x1,855 mm	Medium / High pressure coolant
	Weight (Options included)	2,700kg	Automatic fire extinguisher
NC	NC (MITSUBISHI / FANUC)	M70V Type A, M80(Mitsubishi)	Oil mist collector
	NC display	10.4 Color TFT LCD	Custom colors
	Memory capacity	500KB(Mitsubishi) / 1MB(Fanuc)	Tooling
	Number of tool offset	80sets(Mitsubishi) / 128sets(Fanuc)	
	Background edit function		
	C axis function (Main, Sub spindle)		
	User macro function		
	Nose R compensation		
	Corner chamfering /Corner rounding		
	Fixed cycle		
	Complex fixed cycle		
	Geometric commands		
	Controller manual		
Serial in / Output interface			
CF card / USB interface			



www.nomurads.com

DAESUNG HI-TECH 10, Techno-daero 2-gil, Hyeonpung-myeon, Dalseong-gun, Daegu 43020, Korea
TEL.+82-53-608-3662 / FAX.+82-53-592-6577

NOMURADS 3-1-12, IMAI, OME-CITY, TOKYO198-0023, JAPAN TEL.+81-428-30-1313 / FAX.+81-428-30-1312

DAESUNG HI-TECH VINA TS9 Street, Tien Son Industrial Zone, Tuong Giang Commune, Tu Son Town, Bac Ninh Province
TEL.+84-241-3734-4125~6 / FAX.+84-241-3734-4124

HanzungNC Xuling Village, Xinhua Street, Zhuanghe city, Dalian Liaoning Province, China(Xinhua Industrial Zone)
TEL.+86-411-89812963 / FAX.+86-411-89812962

German office Ludwig-Erhard-Str. 30-34, 65760 Eschborn, Germany
TEL.+49-6196-969-5946 / E-mail.info@nomurads.de