

English

Auto lathe maker with 70 years of tradition

NOMURADS

Swiss Type CNC Automatic Lathe
NN-20J3XB

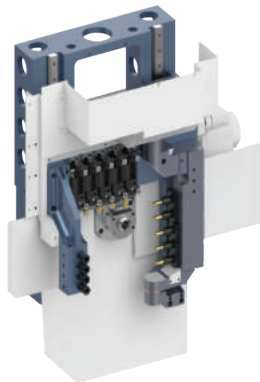
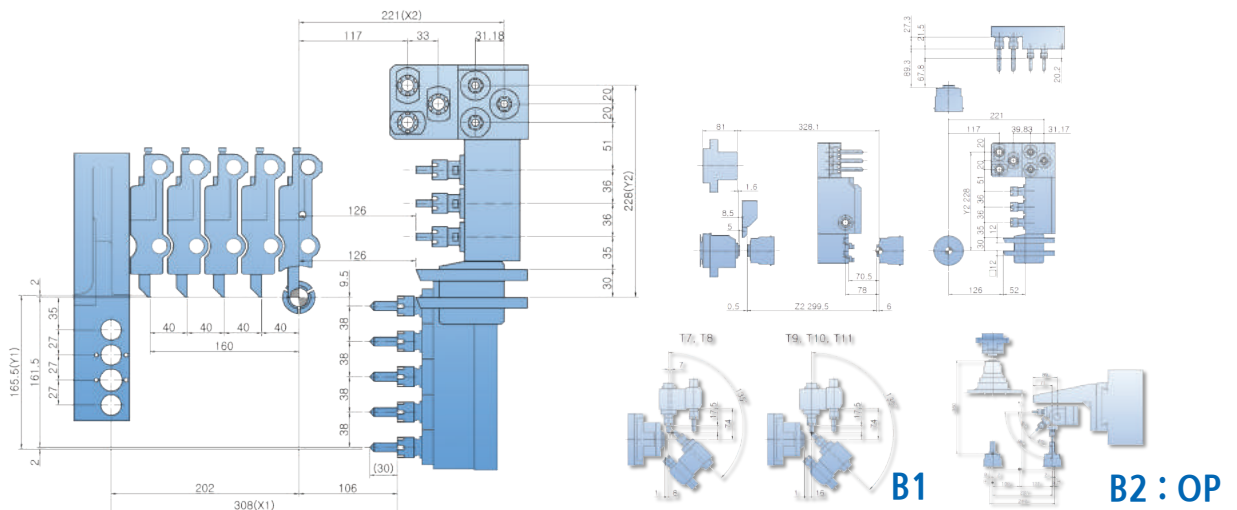


NN-20J3XB

- B axis control (0-135° rotation)**
 - Drilling, tapping, end-mill
- The best tool layout among equivalent models**
 - For complicated shape parts
 - Shortened cycle time
- Expanded tool options**
- Specialized for high-precision parts**
 - Horizontal tool post
 - Dovetail structure



Tool Layout



\$1(Main)

Tool name	Size	Equipment
O.D. Tool	□12.7 x 5	Standard
I.D. Tool	ER16 x 4	Standard
Cross Drill	ER16 x 5	B axis

B1 axis control (Standard)

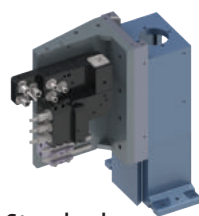
0~135° rotation
 Cross / Eccentric / hole on angled surface 5EA
 (Rigidity attained by top and bottom supporting structure)

\$2(Sub)

Tool name	Standard Size	Option Size	Equipment
O.D. Tool	□12.7 x 2	□12.7 x 2	
I.D. Tool	ER16 x 3	ER16 x 3	
Cross Drill	ER16 x 3	ER16 x 4	B axis control (90°)
Eccentric Drill	ER11 x 3		

B axis control (Option)-NC:M720

0~90° rotation
 Cross / Eccentric / hole on angled surface 4EA



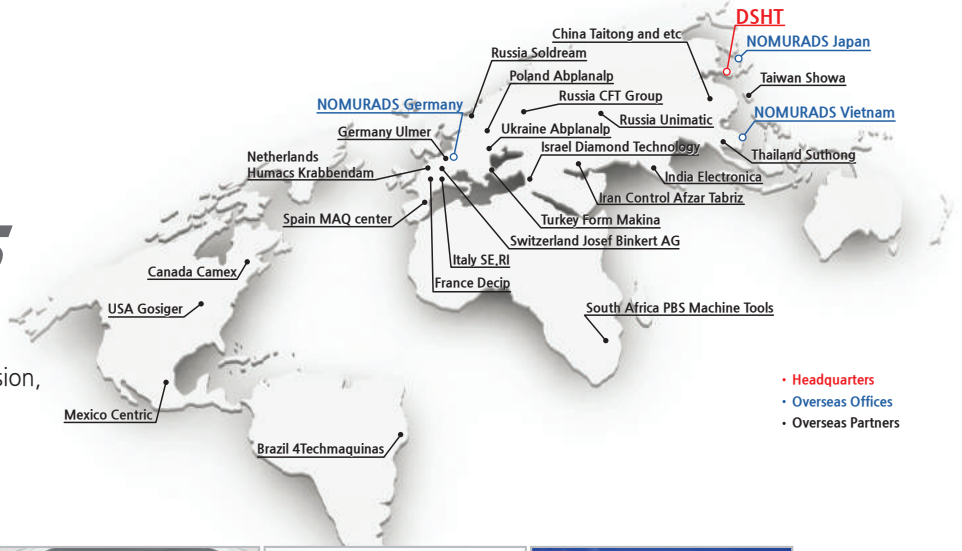
Standard



OP



has been manufacturing swisstype auto lathe for the last 70 years. When you choose NOMURA, you will have high precision, durability and innovation for your production.



- Headquarters
- Overseas Offices
- Overseas Partners



Headquarters DAESUNG HI-TECH
10, Techno-daero 2-gil, Hyeonpung-myeon, Dalseong-gun, Daegu 43020, Korea



Vietnam DAESUNG HI-TECH VINA
TS9 Street, Tien Son Industrial Zone, Tuong Giang Commune, Tu Son Town, Bac Ninh Province



East Japan Technical Center
5-6, Imadera 4, Ome-city, Tokyo



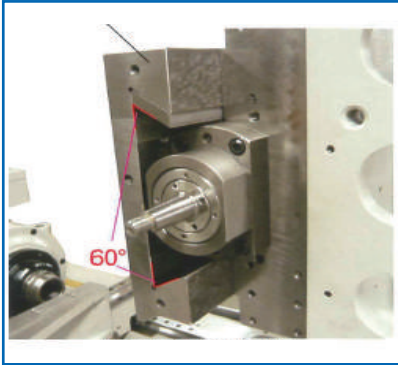
West Japan Technical Center
909, Wakada 3, Midori-ku, Aichi-pref



German Office
Ludwig-Erhard-Str. 30-34, 65760 Eschborn, Germany

NOMURADS

Dovetail structure



The rigidity of NOMURA DS machine is enhanced as its structure contacts the surface of both sides.

Hand scraping



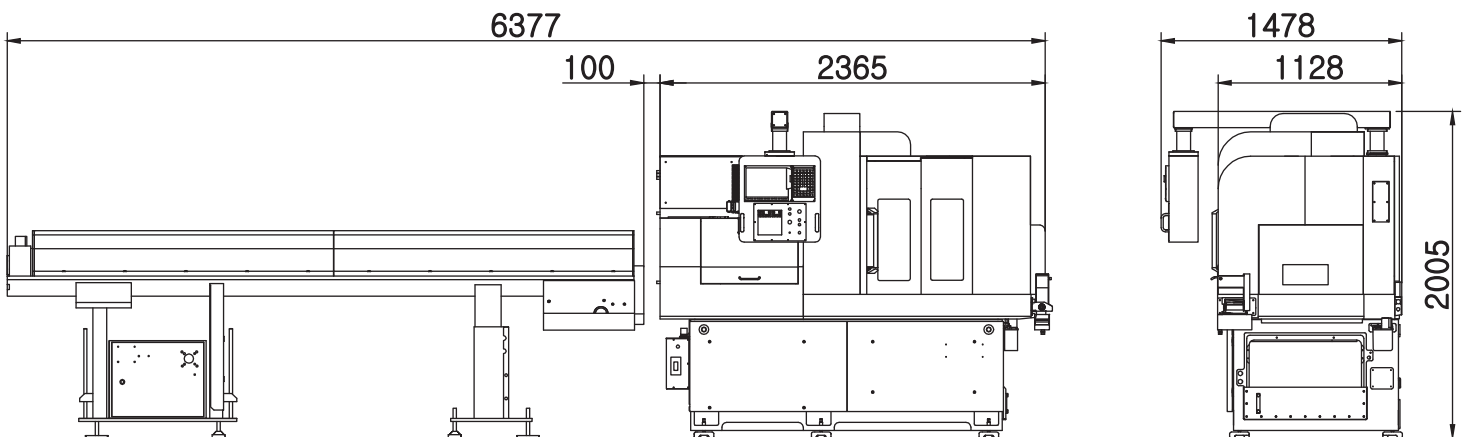
The weighty tool post is glided smoothly by our master artisans and high precision is enhanced as the result.

Integrated casting bed



Machine vibrations are absorbed and machining tolerance affected by the temperature change of cutting oil can be minimized as temperature turning is enacted with coolant tank located in the casting bed.

FLOOR Layout



NN-20J3XB Specifications

Content	Specification	Specification Value	Standard Accessories
Machining capacity	Max. machining diameter	Φ20mm	I.D. tool unit
	Max. machining length	200mm / 1chuck	Cross drill unit
	Max. parts unloading length	93mm	Manual pulse generator(MPG)37P
Spindle	Main spindle through-hole diameter	Φ23mm	Coolant unit
	Spindle rpm (Main/Sub)	Max. 10,000rpm	Rotary guide bush
	Sub spindle chucking diameter	Φ20mm	Tool holder
Tool	Max. number of tools	30 (OP:28)	Drill holder
	Max. machining drill	Φ10mm	Main : Chuck sleeve /Spring/Spindle cap(1set)
	Max. machining tap	M10	Sub : Chuck sleeve /Spring/Spindle cap(1set)
Main	O.D. tool	5 (□12.7X150mm max)	Automatic power turn-off device
	I.D. tool	4 (ER16)	Automatic oiling device (level detector attached)
	Cross drill	5 (ER16)	Cutting oil device (Main/Sub)
	Cross drill rpm	Max. 6,000rpm	Coolant failure detector (Main/Sub)
SUB	O.D. tool	2 (□12.7X150mm max)	Overload detection function
	I.D. tool	3 (ER16)	Door interlock switch
	I.D. eccentric	3 (ER11)	Working light (LED)
	Cross drill	3 (ER16) 4(ER16) : OP	Parts conveyor
	Cross drill rpm	Max. 6,000rpm	Parts catcher
Feed	Rapid feed rate	X1,Y1,X2,Y2:28m/min Z1,Z2:30m/min	Levelling pad
	Min. command unit	0.0001mm	Signal warning light - 3 stage
	C axis Min. command unit (Main, Sub)	0.0001°	Cut-off breakage detector
Motor	Main spindle motor	3.7/1.5kW	Display language (CHN/ENG/FRA/GER/ITA/JPN/KOR/POL/RUS/SPA)
	Cross drill motor	1.5kW	Optional Accessories
	Sub spindle motor	3.7/1.5kW	Long drill holder
	\$2 cross drill motor	1.5kW	Fixed guide bush
	Y1,Z1,X2,Z2 feed axis motor	0.5kW	Tap breakage detector (Main, Sub)
	X1,Y2 axis feed motor	1.0kW	Tool presetter
	Coolant pump (Main, Sub)	0.25kW X 2	Tool air blow
	Lubricant pump	0.003kW	Rear ejection unit (Φ17mm or less)
Dimensions and etc.	Main spindle center height	1,010mm	Spindle tube liner for small part
	Input power capacity	14KVA	Large-sized lubricant pump 1.8ℓ
	Air pressure, flow rate	0.6MPa,40L/min	Chip conveyor & Chip box
	Coolant tank	160L	Medium / High pressure coolant
	WxDxH	2,365x1,478x2,005 mm	Automatic fire extinguisher
	Weight (Options included)	2,800kg	Oil mist collector
NC	MITSUBISHI NC	M80 (※B2 axis applied: M720)	Custom colors
	NC display	10.4 Color TFT LCD	Tooling
	Memory capacity	500KB(B2 axis applied : 2,000KB)	
	Number of tool offset	80sets(B2 axis applied : 80sets)	
	Background edit function		
	C axis function (Main, Sub spindle)		
	User macro function		
	Nose R compensation		
	Corner chamfering /Corner rounding		
	Fixed cycle		
	Complex fixed cycle		
	Geometric commands		
	Controller manual		
Serial in / Output interface			
CF card / USB interface			



www.nomurads.com

DAESUNG HI-TECH 10, Techno-daero 2-gil, Hyeonpung-myeon, Dalseong-gun, Daegu 43020, Korea
 TEL.+82-53-608-3662 / FAX.+82-53-592-6577
NOMURADS 3-1-12, IMAI, OME-CITY, TOKYO198-0023, JAPAN TEL.+81-428-30-1313 / FAX.+81-428-30-1312
DAESUNG HI-TECH VINA TS9 Street, Tien Son Industrial Zone, Tuong Giang Commune, Tu Son Town, Bac Ninh Province
 TEL.+84-241-3734-4125~6 / FAX.+84-241-3734-4124
HanzungNC Xuling Village, Xinhua Street, Zhuanghe city, Dalian Liaoning Province, China(Xinhua Industrial Zone)
 TEL.+86-411-89812963 / FAX.+86-411-89812962
German office Ludwig-Erhard-Str. 30-34, 65760 Eschborn, Germany
 TEL.+49-6196-969-5946 / E-mail.info@nomurads.de